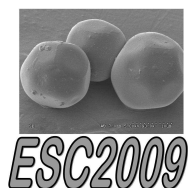


Venue



EUROPEAN STUDENT COLLOID CONFERENCE

July 15-18, 2009

UNIVERSITY OF ALMERÍA

ALMERÍA, SPAIN

The European Student Colloid Conference (ESC2009) will be held at the University of Almeria, July 15-18, 2009

Almería

Almería is a Spanish coastal town and port, capital of the province of Almeria, located in the Autonomous Community of Andalusia, between the provinces of Granada and Murcia.

It is surrounded by the mountains of Gádor west, north to Sierra Alhamilla, east by a plain which culminates in the Sierra de Cabo de Gata, in the Parque Natural de Cabo de Gata-Níjar (a corner of the Iberian Peninsula) and to the south opens to a large bay. The city, located in southeastern Spain on the shores of the Mediterranean Sea, is bordered by the river Andarax. It is the capital of the Almeria coast, which stretches along 219 km.



HOW TO GET TO THE UNIVERSITY OF ALMERIA?

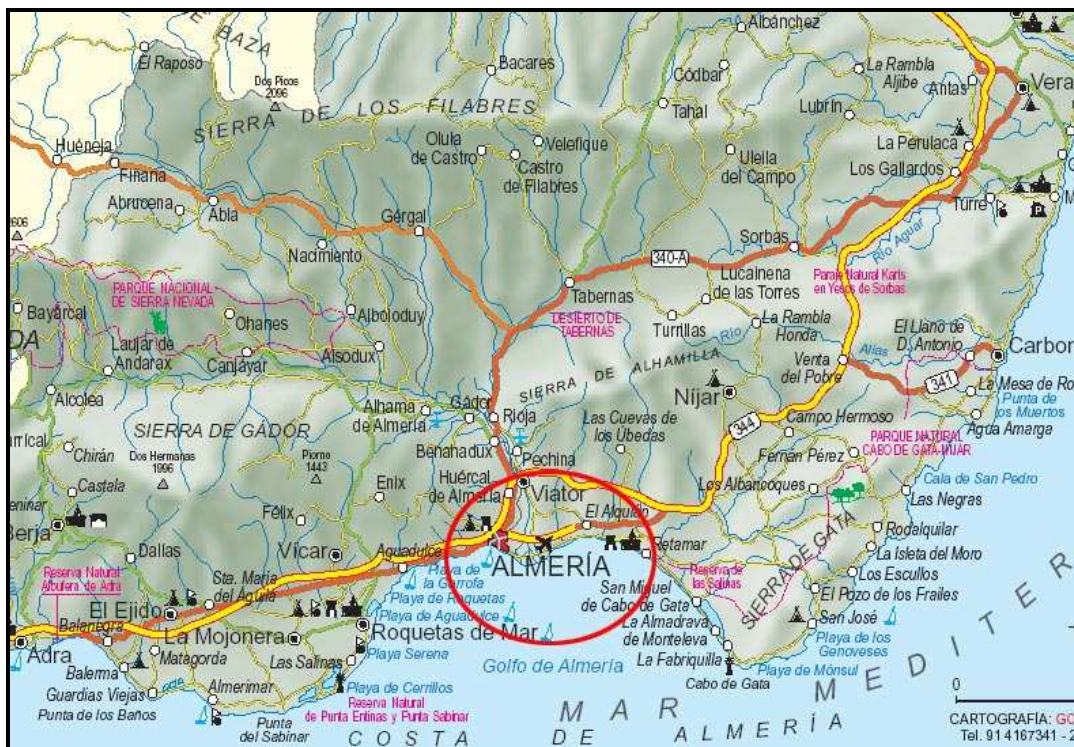
By Train:

R.E.N.F.E: Services from Granada, Barcelona, Madrid, Sevilla and Cádiz.

Web: www.renfe.es

By Airplane:

Almería airport is located on the road to Nijar. It is at 8 km from Almería and 10 minutes by car. If you want, In the airport you can rent a car. To reach the city from there, the best way is to take a taxi.



Airlines flying from / to Almeria are:

- **IBERIA y PAUKNAIR** with flights from Madrid, Barcelona, Melilla y Málaga
- **CONDOR, LUFTHANSA, HAPAG LLOYD, AERO-LLOYD y GERMANIA**, with flights from Stuttgart, Nuremberg, Munich, Frankfurt, Leipzig, Hannover, Dusseldorf, Hamburgo, Dressden y Berlín, .
- **BRITANNIA, AIRTOURS, TLA, y MONARCH**, with flights from Londres, Belfast, Birmingham, Dublín y Manchester.
- **SOBELAIR y VIRGIN** with flights from Bruselas.
- **FINAIR** with flights from Helsinki.
- **TRANSAVIA** with flights from Amsterdam.
- **AIR LAURA** with flights from Viena.
- **LOT** with flights from Varsovia.

Airports nearest to Almeria



The nearest airports to Almeria are Malaga, Alicante, Madrid and Barcelona Airports.

By BUS

The Station Bus of Almeria is in Plaza de la Estación,
s/n, 04005 Tel 950 26 20 98

It is possible to reach Almeria by bus from the major cities in Spain: **Madrid, Barcelona, Sevilla, Córdoba, Cádiz, Granada, Jaén, Málaga y Murcia.**

Station Bus of Almería:

Plaza de la Estación, s/n, Tel 950 26 20 98

Bus Companies:

Alsa: www.alsa.es

Alsina Graells: Tel 950 22 18 88 www.alsinagraells.es

Andreo: Tel 950 22 17 84

Autedia: Tel 950 22 72 16

Marín Amat: Tel 950 22 37 24

Becerra: Tel 950 22 44 03

Bernardo: Tel 950 25 04 22

Frahermar: Tel 950 26 64 11

Ramón del Pino: Tel 950 23 08 11

Bus from the Hotel Indalico to University of Almería

The Hotel Indalico is located in: Dolores Rodriguez Sopeña, 4

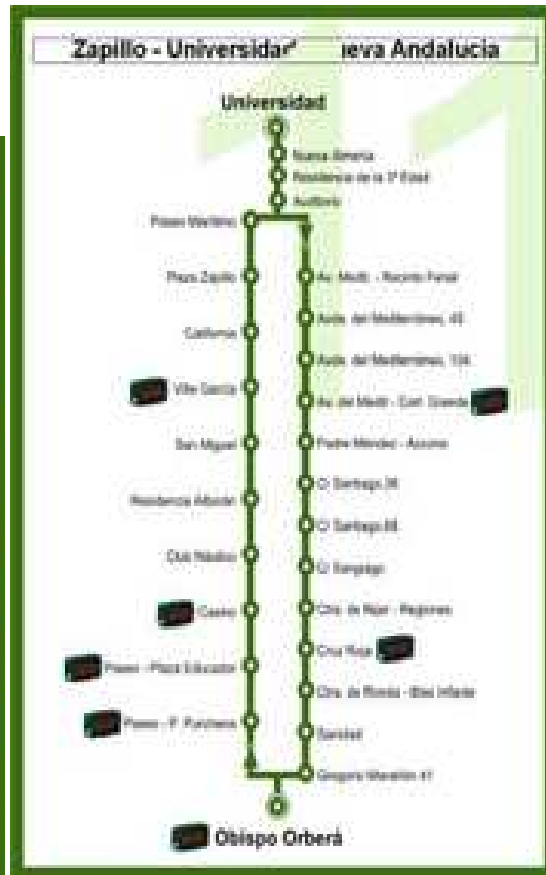
The University Of Almería is located in: Carrera Sacramento S/N, 04120 Almeria

Urban bus lines from the Hotel Indalico to University of Almería:

Line 11 and Line 12

<http://www.surbus.com/inicio.aspx?cat=0&id=11>

Line 11: Zapillo - Universidad - Nueva Andalucía



Line 12: Nueva Andalucía - Universidad - Zapillo



Web of Hotel Indalico-University of Almería

http://maps.google.es/maps?f=d&source=s_d&saddr=Dolores+Rodriguez+Sope%C3%B1a+4&daddr=36.821791,-2.443342+to:universidad+de+almeria&hl=es&geocode=&mra=dpe&rcr=0&mrsp=1&sz=14&via=1&dirflg=w&sll=36.833225,-2.43193&sspn=0.038196,0.071239&ie=UTF8&z=14