

Table S1. Optimal segmentations determined through visual inspections for Almería study site, winter season, and WorldView-3 orthoimages (Percent and 16Bits). SP: MRS segmentation scale. I: Interpreter. The best segmentation (1), the worst (10).

Ranking based on visual interpretation								
	SP	I1	I2	I3	I4	I5	I6	Median
Almeria December WV3 Percent	35	5	3	5	10	4	8	5.0
	40	4	2	6	7	3	10	5.0
	45	2	1	4	3	5	3	3.0
	50	1	4	1	1	6	1	1.0
	55	3	5	2	4	1	5	3.5
	60	6	6	6	3	5	2	4.0
	65	7	7	7	2	8	4	7.0
	70	8	8	8	6	7	7	7.5
	75	9	9	9	8	9	6	9.0
80	10	10	10	10	9	10	9	10.0
Almeria December WV3 16Bits	180	10	9	9	10	10	10	10.0
	220	9	10	10	9	9	9	9.0
	260	8	7	8	8	8	7	8.0
	300	7	6	7	7	6	6	6.5
	340	6	4	6	6	5	4	5.5
	380	4	1	5	5	4	5	4.5
	420	1	2	3	2	1	3	2.0
	460	2	3	4	1	2	1	2.0
	500	3	5	1	3	3	2	3.0
540	5	8	2	4	7	8	6.0	

Table S2. Optimal segmentations determined through visual inspections for Almería study site, winter season, and Sentinel-2 orthoimages (Percent and 16Bits). SP: MRS segmentation scale. I: Interpreter. The best segmentation (1), the worst (10).

Ranking based on visual interpretation								
	SP	I1	I2	I3	I4	I5	I6	Median
Almeria December S2 Percent	2	8	9	10	10	10	10	10.0
	3	5	8	9	9	7	9	8.5
	4	3	4	8	5	4	8	4.5
	5	1	2	4	2	3	7	2.5
	6	2	1	1	1	2	2	1.5
	7	4	3	2	2	4	1	2.5
	8	6	5	7	3	8	3	5.5
	9	7	7	5	6	5	5	5.5
	10	9	6	6	7	9	4	6.5
	11	10	10	3	8	6	6	7.0
	Almeria December S2 16Bits	15	10	7	10	10	10	10
20		9	9	9	9	8	9	9
25		6	6	8	8	7	6	6.5
30		4	4	7	4	5	8	4.5
35		3	2	6	2	2	4	2.5
40		1	1	3	1	3	3	2
45		2	3	1	3	1	2	2
50		5	10	2	5	4	1	4.5
55		7	5	5	6	9	5	5.5
60		8	8	4	7	6	7	7

Table S3. Optimal segmentations determined through visual inspections for Almería study site, summer season, and WorldView-3 orthoimages (Percent and 16Bits). SP: MRS segmentation scale. I: Interpreter. The best segmentation (1), the worst (10).

Ranking based on visual interpretation								
	SP	I1	I2	I3	I4	I5	I6	Median
Almeria June WV3 Percent	20	9	10	10	10	10	10	10.0
	30	5	9	9	9	9	9	9.0
	40	3	8	3	4	6	3	3.5
	50	1	3	1	1	4	2	1.5
	60	2	2	4	2	1	1	2.0
	70	4	5	2	3	5	4	4.0
	80	6	4	7	6	7	8	6.5
	90	7	1	5	5	2	7	5.0
	100	8	6	6	7	3	6	6.0
	110	10	7	8	8	8	5	8.0
Almeria June WV3 16Bits	190	9	10	10	10	10	10	10.0
	245	7	9	9	9	9	9	9.0
	300	4	8	8	8	8	8	8.0
	355	3	7	7	7	5	2	6.0
	410	2	6	6	3	7	7	6.0
	465	1	5	5	1	6	6	5.0
	520	5	4	1	2	3	1	2.5
	575	6	3	2	4	4	5	4.0
	630	8	2	3	5	2	4	3.5
	685	10	1	4	6	1	3	3.5

Table S4. Optimal segmentations determined through visual inspections for Almería study site, summer season, and Sentinel-2 orthoimages (Percent and 16Bits). SP: MRS segmentation scale. I: Interpreter. The best segmentation (1), the worst (10).

Ranking based on visual interpretation								
	SP	I1	I2	I3	I4	I5	I6	Median
Almeria June S2 Percent	2	10	10	10	6	10	10	10.0
	3	7	9	9	2	9	9	9.0
	4	6	8	8	10	8	8	8.0
	5	4	7	3	3	3	2	3.0
	6	2	6	1	4	7	1	3.0
	7	1	1	4	7	6	3	3.5
	8	3	5	2	1	2	5	2.5
	9	5	3	5	8	1	4	4.5
	10	8	4	6	9	5	7	6.5
	11	9	2	7	5	4	6	5.5
	Almeria June S2 16Bits	15	10	10	10	8	10	10
20		9	9	9	3	9	9	9.0
25		8	8	8	6	8	8	8.0
30		7	7	7	1	6	6	6.5
35		6	6	6	10	7	5	6.0
40		4	5	5	5	4	7	5.0
45		3	4	3	4	5	3	3.5
50		1	3	2	9	3	4	3.0
55		2	2	1	2	2	1	2.0
60		5	1	4	7	1	2	3.0

Table S5. Optimal segmentations determined through visual inspections for Antalya study site, winter season, and SPOT-7 orthoimages (Percent and 16Bits). SP: MRS segmentation scale. I: Interpreter. The best segmentation (1), the worst (10).

Ranking based on visual interpretation								
	SP	I1	I2	I3	I4	I5	I6	Median
Antalya February SPOT-7 Percent	15	6	3	5	5	8	9	5.5
	20	4	2	4	3	3	6	3.5
	25	1	1	3	1	5	1	1.0
	30	2	4	1	2	4	2	2.0
	35	3	5	2	4	1	3	3.0
	40	5	6	6	7	2	4	5.5
	45	7	7	7	6	6	5	6.5
	50	8	8	8	8	7	7	8.0
	55	9	9	9	9	9	8	9.0
	60	10	10	10	10	10	10	10.0
Antalya February SPOT-7 16Bits	150	10	10	9	10	10	10	10.0
	170	9	9	10	4	9	9	9.0
	190	8	8	7	3	8	8	8.0
	210	7	7	8	1	7	1	7.0
	230	5	6	5	2	1	2	3.5
	250	2	5	3	5	6	4	4.5
	270	1	4	1	6	2	3	2.5
	290	3	2	2	7	4	5	3.5
	310	4	3	6	8	3	6	5.0
	330	6	1	4	9	5	7	5.5

Table S6. Optimal segmentations determined through visual inspections for Antalya study site, winter season, and Sentinel-2 orthoimages (Percent and 16Bits). I: Interpreter. SP: MRS segmentation scale. I: Interpreter. The best segmentation (1), the worst (10).

Ranking based on visual interpretation								
	SP	I1	I2	I3	I4	I5	I6	Median
Antalya February S2 Percent	2	7	10	10	8	10	7	9.0
	3	4	2	9	1	9	6	5.0
	4	2	1	4	2	4	1	2.0
	5	1	3	3	3	2	2	2.5
	6	3	4	2	4	1	3	3.0
	7	5	5	1	5	3	4	4.5
	8	6	6	5	6	5	5	5.5
	9	8	7	7	7	6	8	7.0
	10	9	8	6	9	7	9	8.5
	11	10	9	8	10	8	10	9.5
	Antalya February S2 16Bits	15	10	10	10	9	10	10
20		7	9	9	10	8	9	9.0
25		4	3	1	3	1	7	3.0
30		3	4	2	1	2	2	2.0
35		2	1	4	2	3	1	2.0
40		1	5	3	4	4	3	3.5
45		5	2	5	5	5	4	5.0
50		6	6	8	6	7	5	6.0
55		8	7	7	7	6	6	7.0
60		9	8	6	8	9	8	8.0

Table S7. Optimal segmentations determined through visual inspections for Antalya study site, summer season, and SPOT-7 orthoimages (Percent and 16Bits). SP: MRS segmentation scale. I: Interpreter. The best segmentation (1), the worst (10).

Ranking based on visual interpretation								
	SP	I1	I2	I3	I4	I5	I6	Median
Antalya July SPOT-7 Percent	15	6	7	10	6	10	9	8.0
	20	3	4	9	4	5	6	4.5
	25	1	1	2	1	2	1	1.0
	30	2	2	1	2	1	2	2.0
	35	4	3	3	3	3	3	3.0
	40	5	5	4	5	4	4	4.5
	45	7	6	5	7	6	5	6.0
	50	8	8	6	8	7	7	7.5
	55	9	9	7	9	8	8	8.5
	60	10	10	5	10	9	10	10.0
Antalya July SPOT-7 16Bits	140	10	10	10	8	10	10	10.0
	170	8	9	9	9	9	9	9.0
	200	5	8	7	6	5	8	6.5
	230	3	7	6	3	6	2	4.5
	260	1	6	5	1	4	1	2.5
	290	2	5	4	2	1	3	2.5
	320	4	2	1	4	2	4	3.0
	350	6	1	2	5	3	5	4.0
	380	7	3	3	7	7	6	6.5
	410	9	4	8	10	8	7	8.0

Table S8. Optimal segmentations determined through visual inspections for Antalya study site, summer season, and Sentinel-2 orthoimages (Percent and 16Bits). SP: MRS segmentation scale. I: Interpreter. The best segmentation (1), the worst (10).

Ranking based on visual interpretation									
	SP	I1	I2	I3	I4	I5	I6	Median	
Antalya July S2 Percent	3	4	6	10	10	10	8	9.0	
	4	2	5	9	1	7	7	6.0	
	5	1	2	8	2	2	1	2.0	
	6	3	1	2	3	1	2	2.0	
	7	5	3	1	4	4	3	3.5	
	8	6	7	5	5	3	4	5.0	
	9	7	8	3	6	6	5	6.0	
	10	8	4	4	7	5	6	5.5	
	11	9	10	6	8	8	9	8.5	
	12	10	9	7	9	9	10	9.0	
	Antalya July S2 16Bits	25	9	10	10	10	10	10	10.0
		30	5	9	9	8	9	9	9.0
35		4	8	8	5	8	8	8.0	
40		2	7	7	3	7	2	5.0	
45		1	4	6	1	4	1	2.5	
50		3	2	3	2	1	3	2.5	
55		6	3	5	4	3	4	4.0	
60		7	5	4	6	2	5	5.0	
65		8	6	2	7	5	6	6.0	
70		10	1	1	9	6	7	6.5	

Table S9. Computed segmentation accuracy metrics and median values of visual rankings for Almería study site, winter season, and WorldView-3 orthoimages (Percent and 16Bits).

	SP	Total object number	MED2 (0)	AFI (0)	D-index (0)	ED3 (0)	F measure (1)	Fitness (0)	M (1)	QR (0)	Median visual ranking
Almeria December WV3 Percent	35	3229	0.813	0.084	0.436	0.26	0.508	7.315	0.821	0.582	5.0
	40	2590	0.463	-0.035	0.385	0.21	0.495	5.932	0.840	0.506	5.0
	45	2118	0.344	-0.147	0.355	0.18	0.478	4.902	0.844	0.464	3.0
	50	1774	0.341	-0.327	0.332	0.16	0.459	4.231	0.838	0.432	1.0
	55	1534	0.373	-0.434	0.319	0.15	0.443	3.624	0.826	0.415	3.5
	60	1341	0.493	-0.616	0.300	0.16	0.429	3.126	0.804	0.401	4.0
	65	1189	0.655	-0.856	0.308	0.17	0.407	2.684	0.781	0.415	7.0
	70	1089	0.771	-1.022	0.318	0.18	0.398	2.513	0.764	0.430	7.5
	75	991	0.899	-1.212	0.335	0.20	0.386	2.326	0.740	0.456	9.0
	80	885	1.115	-1.520	0.364	0.22	0.373	2.042	0.708	0.495	10.0
Almeria December WV3 16Bits	180	7206	3.430	0.413	0.604	0.40	0.500	17.547	0.696	0.818	10.0
	220	5074	2.221	0.291	0.571	0.36	0.510	13.070	0.751	0.762	9.0
	260	3762	1.374	0.146	0.517	0.32	0.511	10.158	0.793	0.688	8.0
	300	2967	0.925	0.041	0.474	0.29	0.498	8.519	0.807	0.627	6.5
	340	2358	0.668	-0.106	0.437	0.26	0.479	6.801	0.804	0.578	5.5
	380	1908	0.498	-0.312	0.414	0.23	0.462	5.237	0.795	0.539	4.5
	420	1594	0.447	-0.413	0.388	0.21	0.446	3.637	0.788	0.506	2.0
	460	1384	0.496	-0.583	0.362	0.19	0.436	2.628	0.777	0.472	2.0
	500	1231	0.618	-0.756	0.360	0.19	0.422	2.163	0.763	0.467	3.0
	540	1094	0.808	-1.022	0.364	0.20	0.408	1.680	0.740	0.479	6.0

Table S10. Computed segmentation accuracy metrics and median values of visual rankings for Almería study site, winter season, and Sentinel-2 orthoimages (Percent and 16Bits).

	SP	Total object number	MED2 (0)	AFI (0)	D-index (0)	ED3 (0)	F measure (1)	Fitness (0)	M (1)	QR (0)	Median visual ranking
Almería December S2 Percent	2	12345	7.601	0.701	0.661	0.463	0.335	19.375	0.496	0.908	10.0
	3	5441	2.695	0.448	0.592	0.407	0.400	8.367	0.604	0.807	8.5
	4	3226	1.225	0.224	0.515	0.341	0.407	4.931	0.663	0.699	4.5
	5	2188	0.741	-0.031	0.453	0.297	0.393	3.453	0.677	0.622	2.5
	6	1603	0.638	-0.309	0.416	0.272	0.376	2.690	0.674	0.577	1.5
	7	1283	0.749	-0.550	0.392	0.258	0.361	2.249	0.661	0.549	2.5
	8	1010	0.998	-0.916	0.408	0.268	0.344	1.831	0.633	0.568	5.5
	9	828	1.318	-1.411	0.423	0.283	0.326	1.596	0.606	0.591	5.5
	10	692	1.834	-2.028	0.444	0.302	0.317	1.441	0.577	0.621	6.5
	11	579	2.279	-2.740	0.469	0.325	0.307	1.332	0.543	0.657	7.0
Almería December S2 16Bits	15	11317	6.166	0.616	0.653	0.455	0.384	26.975	0.562	0.893	10
	20	6435	3.062	0.469	0.610	0.416	0.407	15.124	0.621	0.826	9
	25	4134	1.638	0.325	0.560	0.370	0.411	9.315	0.658	0.752	6.5
	30	3018	1.106	0.123	0.521	0.336	0.407	6.418	0.678	0.698	4.5
	35	2304	0.790	-0.071	0.488	0.306	0.390	4.895	0.682	0.654	2.5
	40	1855	0.698	-0.323	0.461	0.286	0.375	3.921	0.685	0.620	2
	45	1526	0.774	-0.657	0.448	0.279	0.359	3.146	0.666	0.604	2
	50	1291	0.940	-0.923	0.446	0.280	0.346	2.614	0.647	0.601	4.5
	55	1114	1.099	-1.228	0.451	0.283	0.335	2.266	0.633	0.608	5.5
60	966	1.258	-1.429	0.459	0.289	0.326	2.051	0.619	0.619	7	

Table S11. Computed segmentation accuracy metrics and median values of visual rankings for Almería study site, summer season, and WorldView-3 orthoimages (Percent and 16Bits).

	SP	Total object number	MED2 (0)	AFI (0)	D-index (0)	ED3 (0)	F measure (1)	Fitness (0)	M (1)	QR (0)	Median visual ranking
Almería June WV3 Percent	20	10429	5.720	0.558	0.625	0.434	0.446	19.049	0.620	0.868	10
	30	4598	1.481	0.235	0.488	0.321	0.523	9.956	0.811	0.667	9
	40	2713	0.522	0.035	0.379	0.214	0.497	6.264	0.861	0.505	3.5
	50	1991	0.308	-0.113	0.320	0.169	0.469	4.304	0.866	0.424	1.5
	60	1572	0.368	-0.348	0.297	0.150	0.446	3.359	0.842	0.393	2
	70	1318	0.462	-0.562	0.295	0.153	0.432	2.711	0.818	0.392	4
	80	1149	0.548	-0.669	0.311	0.166	0.418	2.373	0.800	0.412	6.5
	90	1024	0.648	-0.823	0.306	0.178	0.408	1.994	0.779	0.415	5
	100	911	0.864	-1.203	0.320	0.198	0.395	1.796	0.745	0.441	6
	110	817	1.106	-1.504	0.347	0.219	0.379	1.695	0.712	0.479	8
Almería June WV3 16Bits	190	6957	3.670	0.447	0.609	0.408	0.477	15.904	0.683	0.827	10
	245	4515	1.931	0.299	0.549	0.354	0.493	10.027	0.755	0.737	9
	300	3174	1.075	0.155	0.485	0.298	0.489	7.122	0.802	0.646	8
	355	2379	0.664	-0.046	0.445	0.255	0.468	5.196	0.812	0.585	6
	410	1890	0.426	-0.168	0.393	0.212	0.457	3.587	0.820	0.514	6
	465	1564	0.360	-0.357	0.356	0.182	0.441	2.895	0.823	0.463	5
	520	1340	0.387	-0.450	0.342	0.170	0.427	2.335	0.818	0.443	2.5
	575	1162	0.545	-0.671	0.325	0.177	0.415	2.067	0.795	0.430	4
	630	1042	0.641	-0.824	0.3175	0.175	0.406	1.646	0.786	0.424	3.5
	685	952	0.734	-0.921	0.3179	0.179	0.398	1.521	0.776	0.426	3.5

Table S12. Computed segmentation accuracy metrics and median values of visual rankings for Almería study site, summer season, and Sentinel-2 orthoimages (Percent and 16Bits).

	SP	Total object number	MED2 (0)	AFI (0)	D-index (0)	ED3 (0)	F measure (1)	Fitness (0)	M (1)	QR (0)	Median visual ranking
Almería June S2 Percent	2	16880	11.31	0.747	0.677	0.475	0.316	31.423	0.478	0.931	10
	3	7348	4.256	0.537	0.626	0.434	0.398	14.049	0.603	0.853	9
	4	4256	2.035	0.321	0.560	0.381	0.417	8.013	0.672	0.761	8
	5	2867	1.019	0.142	0.485	0.321	0.411	5.220	0.722	0.663	3
	6	2113	0.689	-0.080	0.440	0.284	0.394	3.841	0.726	0.603	3
	7	1665	0.508	-0.286	0.400	0.254	0.380	2.986	0.725	0.551	3.5
	8	1372	0.551	-0.445	0.392	0.247	0.367	2.461	0.712	0.540	2.5
	9	1139	0.641	-0.661	0.385	0.246	0.357	2.086	0.696	0.534	4.5
	10	973	0.832	-0.954	0.381	0.247	0.348	1.801	0.672	0.535	6.5
	11	874	1.019	-1.204	0.384	0.253	0.340	1.648	0.658	0.542	5.5
	Almería June S2 16Bits	15	18136	11.63	0.634	0.680	0.477	0.391	45.722	0.552	0.933
20		10537	6.216	0.531	0.650	0.455	0.409	29.876	0.605	0.890	9
25		6611	3.520	0.408	0.612	0.423	0.411	17.840	0.645	0.833	8
30		4633	2.197	0.280	0.579	0.393	0.413	12.531	0.680	0.782	6.5
35		3469	1.400	0.162	0.543	0.361	0.403	8.985	0.693	0.729	6
40		2742	1.056	-0.004	0.512	0.335	0.393	6.813	0.696	0.687	5
45		2274	0.818	-0.129	0.494	0.317	0.380	5.791	0.693	0.660	3.5
50		1933	0.714	-0.261	0.476	0.304	0.369	4.729	0.686	0.637	3
55		1632	0.698	-0.491	0.467	0.294	0.361	3.829	0.674	0.624	2
60		1412	0.716	-0.654	0.455	0.289	0.352	3.424	0.665	0.613	3

Table S13. Computed segmentation accuracy metrics and median values of visual rankings for Antalya study site, winter season, and SPOT-7 orthoimages (Percent and 16Bits).

	SP	Total object number	MED2 (0)	AFI (0)	D-index (0)	ED3 (0)	F measure (1)	Fitness (0)	M (1)	QR (0)	Median visual ranking
Antalya February SPOT-7 Percent	15	9409	1.097	0.163	0.433	0.28	0.516	8.624	0.829	0.598	5.5
	20	5758	0.425	-0.021	0.328	0.19	0.490	5.064	0.866	0.444	3.5
	25	3861	0.252	-0.316	0.274	0.14	0.446	3.592	0.852	0.369	1
	30	2813	0.338	-0.523	0.272	0.14	0.404	2.862	0.831	0.366	2
	35	2165	0.561	-0.875	0.297	0.17	0.364	2.186	0.783	0.404	3
	40	1705	0.848	-1.297	0.333	0.20	0.329	1.889	0.736	0.453	5.5
	45	1341	1.307	-2.149	0.360	0.23	0.292	1.552	0.680	0.500	6.5
	50	1108	1.689	-2.936	0.389	0.26	0.270	1.417	0.640	0.543	8
	55	943	2.415	-4.295	0.422	0.29	0.248	1.336	0.589	0.596	9
	60	811	2.802	-4.827	0.448	0.31	0.233	1.248	0.559	0.633	10
Antalya February SPOT-7 16Bits	150	5005	1.103	0.018	0.508	0.30	0.463	6.846	0.819	0.665	10
	170	4002	0.737	-0.126	0.461	0.26	0.437	5.187	0.821	0.603	9
	190	3319	0.576	-0.288	0.433	0.24	0.422	4.540	0.819	0.563	8
	210	2829	0.512	-0.494	0.414	0.22	0.404	4.129	0.814	0.537	7
	230	2411	0.505	-0.689	0.388	0.20	0.388	3.067	0.800	0.498	3.5
	250	2103	0.586	-0.819	0.376	0.19	0.367	2.334	0.782	0.483	4.5
	270	1849	0.798	-1.097	0.364	0.19	0.343	1.864	0.759	0.474	2.5
	290	1652	0.936	-1.286	0.372	0.20	0.323	1.711	0.739	0.487	3.5
	310	1498	1.005	-1.364	0.372	0.20	0.312	1.503	0.732	0.488	5
	330	1340	1.161	-1.625	0.369	0.20	0.302	1.335	0.721	0.487	5.5

Table S14. Computed segmentation accuracy metrics and median values of visual rankings for Antalya study site, winter season, and Sentinel-2 orthoimages (Percent and 16Bits).

	SP	Total object number	MED 2 (0)	AFI (0)	D-index (0)	ED3 (0)	F measure (1)	Fitness (0)	M (1)	QR (0)	Median visual ranking
Antalya February S2 Percent	2	11651	2.981	0.469	0.603	0.414	0.436	10.52	0.650	0.821	9
	3	5279	0.817	0.029	0.489	0.314	0.427	4.717	0.711	0.663	5
	4	3211	0.496	-0.459	0.413	0.265	0.389	2.923	0.707	0.570	2
	5	2172	0.644	-0.947	0.384	0.243	0.349	2.177	0.686	0.534	2.5
	6	1599	0.979	-1.569	0.388	0.258	0.311	1.673	0.647	0.547	3
	7	1229	1.504	-2.387	0.411	0.288	0.281	1.405	0.596	0.587	4.5
	8	982	2.000	-3.133	0.440	0.308	0.259	1.252	0.561	0.628	5.5
	9	798	2.744	-4.204	0.482	0.340	0.235	1.172	0.510	0.686	7
	10	676	3.322	-5.032	0.510	0.360	0.218	1.136	0.477	0.723	8.5
	11	580	4.447	-6.454	0.539	0.381	0.195	1.096	0.438	0.763	9.5
	Antalya February S2 16Bits	15	10816	3.061	0.438	0.609	0.418	0.449	12.92	0.650	0.826
20		6287	1.454	0.263	0.554	0.367	0.436	7.210	0.690	0.742	9
25		4131	0.716	0.035	0.496	0.313	0.410	4.630	0.708	0.660	3
30		3005	0.471	-0.274	0.467	0.278	0.378	3.213	0.699	0.617	2
35		2323	0.520	-0.659	0.460	0.269	0.345	2.502	0.680	0.606	2
40		1859	0.689	-1.110	0.457	0.265	0.325	2.015	0.671	0.602	3.5
45		1498	1.077	-1.731	0.459	0.274	0.301	1.741	0.634	0.609	5
50		1278	1.499	-2.393	0.469	0.286	0.285	1.470	0.606	0.625	6
55		1108	1.981	-3.052	0.478	0.302	0.260	1.315	0.576	0.643	7
60	940	2.486	-4.128	0.477	0.306	0.243	1.193	0.560	0.648	8	

Table S15. Computed segmentation accuracy metrics and median values of visual rankings for Antalya study site, summer season, and SPOT-7 orthoimages (Percent and 16Bits).

	SP	Total object number	MED 2 (0)	AFI (0)	D-index (0)	ED3 (0)	F measure (1)	Fitness (0)	M (1)	QR (0)	Median visual ranking
Antalya July SPOT7 Percent	15	9425	1.616	0.230	0.498	0.335	0.517	10.349	0.806	0.689	8
	20	5657	0.481	0.070	0.349	0.211	0.490	5.740	0.856	0.482	4.5
	25	4017	0.215	-0.076	0.272	0.142	0.462	4.038	0.869	0.371	1
	30	2986	0.264	-0.302	0.261	0.133	0.420	2.968	0.847	0.357	2
	35	2351	0.404	-0.612	0.298	0.150	0.388	2.369	0.812	0.398	3
	40	1878	0.503	-0.847	0.306	0.165	0.350	2.001	0.789	0.412	4.5
	45	1610	0.680	-1.200	0.316	0.187	0.334	1.752	0.755	0.433	6
	50	1351	1.043	-1.929	0.350	0.211	0.303	1.548	0.712	0.479	7.5
	55	1136	1.432	-2.656	0.386	0.240	0.275	1.445	0.668	0.529	8.5
	60	974	1.633	-2.977	0.413	0.257	0.257	1.309	0.642	0.562	10
Antalya July SPOT7 16Bits	14	5644	1.617	0.193	0.545	0.343	0.457	9.088	0.794	0.725	10
	17	4148	0.938	0.065	0.483	0.289	0.435	6.220	0.826	0.639	9
	20	3226	0.634	-0.051	0.434	0.253	0.401	4.326	0.831	0.575	6.5
	23	2606	0.403	-0.183	0.388	0.213	0.373	3.274	0.831	0.512	4.5
	26	2178	0.346	-0.285	0.355	0.192	0.348	2.476	0.826	0.470	2.5
	29	1882	0.396	-0.493	0.360	0.189	0.331	2.311	0.813	0.473	2.5
	32	1595	0.463	-0.680	0.332	0.160	0.315	1.729	0.813	0.431	3
	35	1420	0.512	-0.739	0.330	0.158	0.299	1.470	0.807	0.427	4
	38	1229	0.664	-1.014	0.301	0.155	0.282	1.040	0.798	0.398	6.5
	41	1108	1.221	-2.305	0.309	0.172	0.269	0.980	0.765	0.415	8

Table S16. Computed segmentation accuracy metrics and median values of visual rankings for Antalya study site, summer season, and Sentinel-2 orthoimages (Percent and 16Bits).

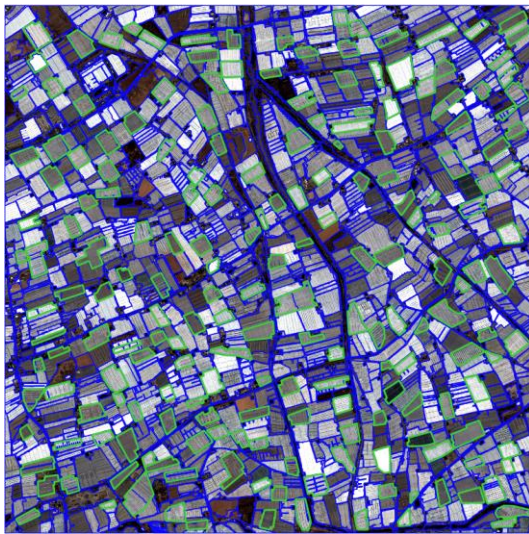
	SP	Total object number	MED 2 (0)	AFI (0)	D-index (0)	ED3 (0)	F measure (1)	Fitness (0)	M (1)	QR (0)	Median visual ranking
Antalya July S2 Percent	3	6918	1.970	0.216	0.576	0.388	0.445	9.104	0.693	0.780	9
	4	4116	0.882	-0.137	0.505	0.331	0.420	5.017	0.715	0.685	6
	5	2817	0.533	-0.618	0.458	0.286	0.393	3.502	0.713	0.621	2
	6	2100	0.586	-0.889	0.430	0.273	0.355	2.639	0.699	0.587	2
	7	1639	0.782	-1.253	0.431	0.272	0.324	2.068	0.667	0.588	3.5
	8	1323	1.184	-1.964	0.445	0.290	0.295	1.704	0.618	0.612	5
	9	1126	1.481	-2.517	0.454	0.302	0.276	1.572	0.592	0.628	6
	10	930	1.815	-3.085	0.467	0.315	0.258	1.394	0.561	0.650	5.5
	11	809	2.195	-3.586	0.483	0.330	0.238	1.244	0.534	0.674	8.5
	12	689	2.655	-4.332	0.496	0.341	0.218	1.148	0.513	0.694	9
Antalya July S2 16Bits	25	6044	2.216	0.248	0.589	0.399	0.407	10.773	0.658	0.794	10
	30	4435	1.530	0.136	0.554	0.367	0.388	6.924	0.667	0.743	9
	35	3359	0.973	-0.053	0.522	0.340	0.364	5.256	0.670	0.699	8
	40	2657	0.801	-0.359	0.513	0.327	0.343	4.234	0.664	0.683	5
	45	2180	0.682	-0.634	0.501	0.319	0.330	3.438	0.647	0.669	2.5
	50	1824	0.795	-1.156	0.496	0.313	0.312	2.836	0.632	0.662	2.5
	55	1568	0.956	-1.565	0.493	0.310	0.287	2.533	0.620	0.657	4
	60	1378	1.211	-1.937	0.490	0.309	0.270	2.129	0.602	0.656	5
	65	1217	1.452	-2.304	0.487	0.309	0.257	1.777	0.587	0.655	6
	70	1071	1.570	-2.517	0.475	0.304	0.245	1.599	0.587	0.644	6.5

Table S17. Total points (best and worst cases) for each supervised metrics in Almeria study site.

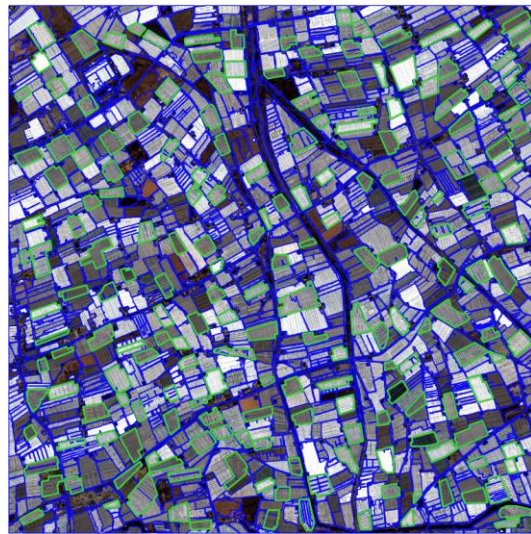
	Almeria December 2020				Almeria June 2020				Total Points
	Best				Best				
	WV3 Percent	WV3 16 bits	S2 Percent	S2 16 bits	WV3 Percent	WV3 16 bits	S2 Percent	S2 16 bits	
MED2	3	3	3	3	3		1	3	19
AFI			2	2	1		2		7
D-index		2	2	1		2		2	9
ED3	1	2	2	3	2	3		2	15
F measure			1						1
Fitness						2		2	4
M	2		2	3	3		2		12
QR		2	2	1		2		2	9
	Worst				Worst				Total Points
	WV3 Percent	WV3 16 bits	S2 Percent	S2 16 bits	WV3 Percent	WV3 16 bits	S2 Percent	S2 16 bits	
	MED2	3	3	3	3	3	3	3	
AFI	3		1	1	1				6
D-index		3	3	3	3	3	3	3	21
ED3 (0)		3	3	3	3	3	3	3	21
F measure	3		1	1	1		3		9
Fitness		3	3	3	3	3	3	3	21
M	3	3	3	3	3	3	3	3	24
QR		3	3	3	3	3	3	3	21

Table S18. Total points (best and worst cases) for each supervised metrics in Antalya study site.

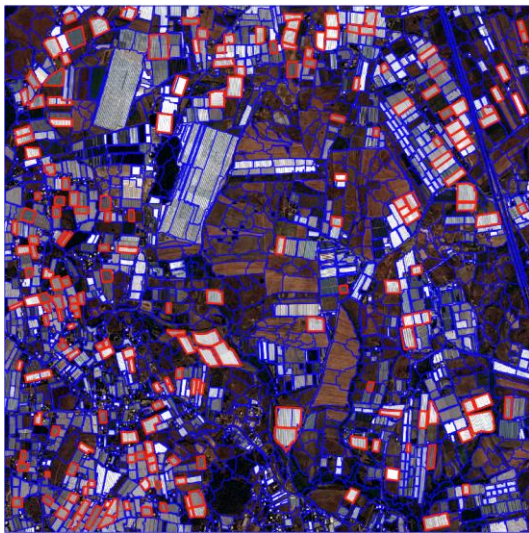
	Antalya February 2019				Antalya July 2019				Total Points
	Best				Best				
	SPOT-7 Percent	SPOT-7 16 bits	S2 Percent	S2 16 bits	SPOT-7 Percent	SPOT-7 16 bits	S2 Percent	S2 16 bits	
MED2	3	2	3	3	3	3	3	3	23
AFI				2					2
D-index	2	3	2	1	2		3		13
ED3	2	1	2	1	2		2		10
F measure									0
Fitness									0
M				2	3				5
QR	2	3	2	1	2		3		13
	Worst				Worst				Total Points
	WV3 Percent	WV3 16 bits	S2 Percent	S2 16 bits	WV3 Percent	WV3 16 bits	S2 Percent	S2 16 bits	
	MED2	3		3	3	3	3	3	
AFI	3		3	1	3	1	3		14
D-index	3	3	2	3	1	3	3	3	21
ED3 (0)	3	3	2	3	1	3	3	3	21
F measure	3		3	1	3	1	3		14
Fitness		3	2	3	1	3	3	3	18
M	3		3	1	3	1	3		14
QR	3	3	2	3	1	3	3	3	21



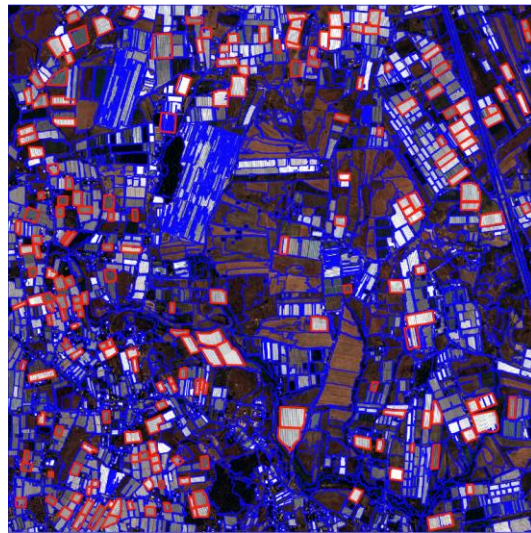
WV3 Almeria summer Percent
Best segmentation (MED2=0.192): SP=61; Shp=0.1



WV3 Almeria summer 16Bits
Best segmentation (MED2=0.221): SP=195; Shp=0.9

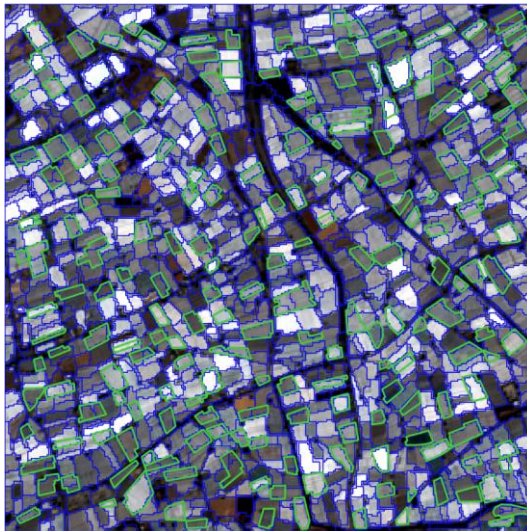


SPOT-7 Antalya summer Percent
Best segmentation (MED2=0.192): SP=33; Shp=0.3

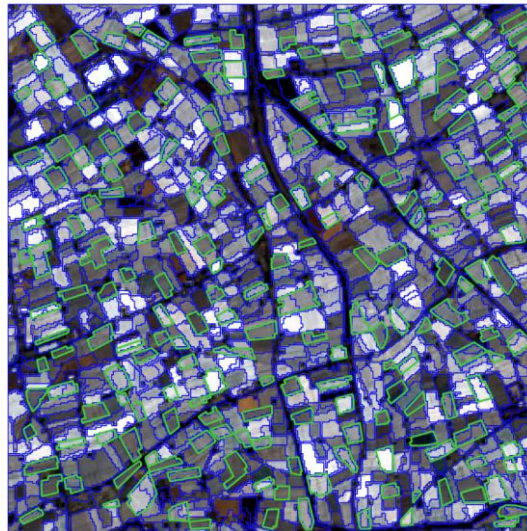


SPOT-7 Antalya summer 16Bits
Best segmentation (MED2=0.223): SP=215; Shp=0.7

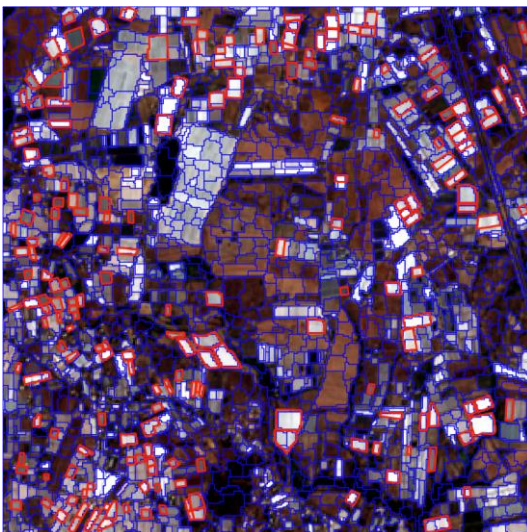
Figure S1. High resolution image sources used in Almería and Antalya in summer showing the 200 reference polygons (green in Almería and red in Antalya) and the best segmentation based on MED2 for each case. Scale (SP), shape (Shp) and MED2 value are also shown.



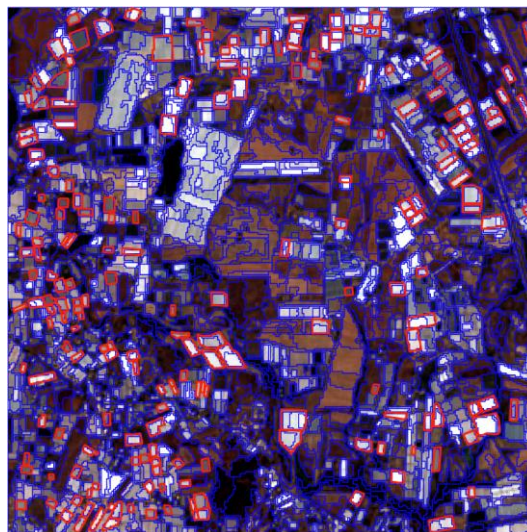
S2 Almeria summer Percent
Best segmentation (MED2=0.448): SP=7; Shp=0.4



S2 Almeria summer 16Bits
Best segmentation (MED2=0.546): SP=26; Shp=0.9

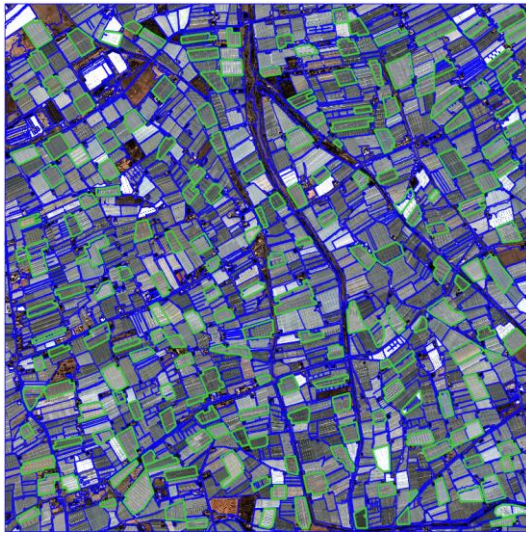


S2 Antalya summer Percent
Best segmentation (MED2=0.533): SP=5; Shp=0.5

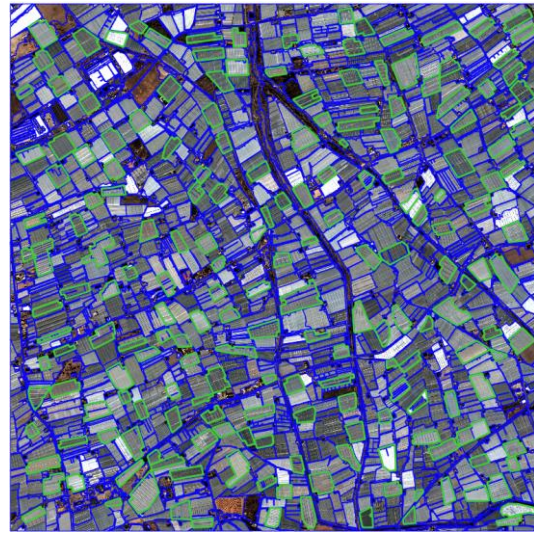


S2 Antalya summer 16Bits
Best segmentation (MED2=0.581): SP=27; Shp=0.8

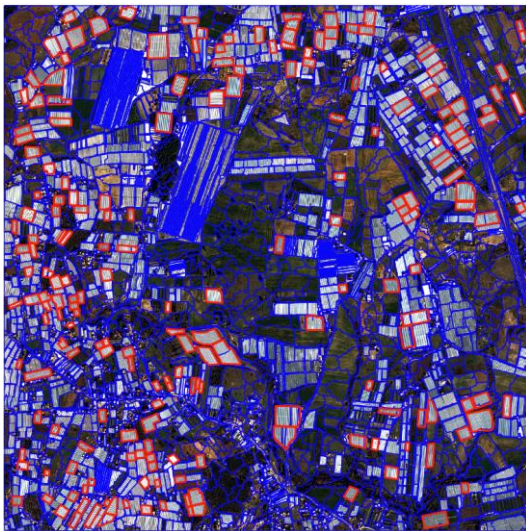
Figure S2. Medium resolution image sources used in Almería and Antalya in summer showing the 200 reference polygons (green in Almería and red in Antalya) and the best segmentation based on MED2 for each case. Scale (SP), shape (Shp) and MED2 value are also shown.



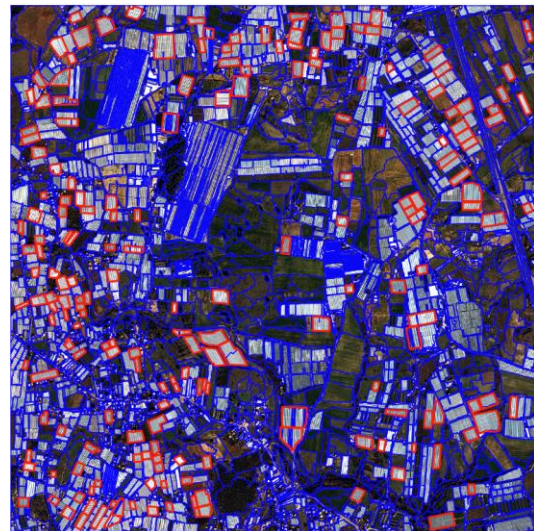
WV3 Almeria winter Percent
Best segmentation (MED2=0.210): SP=60; Shp=0.1



WV3 Almeria winter 16Bits
Best segmentation (MED2=0.226): SP=196; Shp=0.9

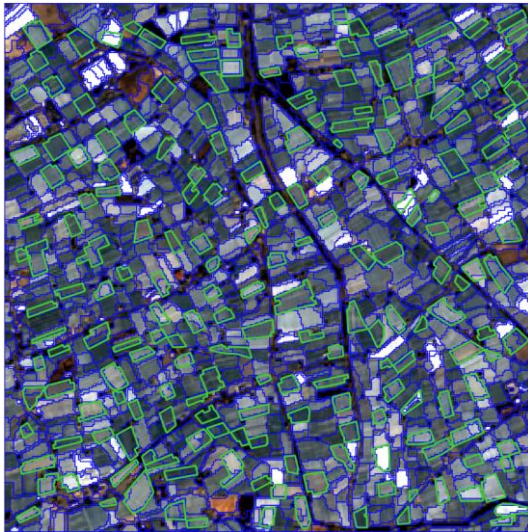


SPOT-7 Antalya winter Percent
Best segmentation (MED2=0.150): SP=28; Shp=0.2

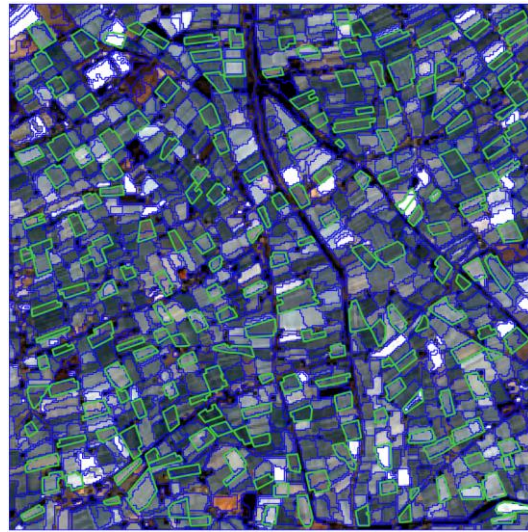


SPOT-7 Antalya winter 16Bits
Best segmentation (MED2=0.199): SP=104; Shp=0.9

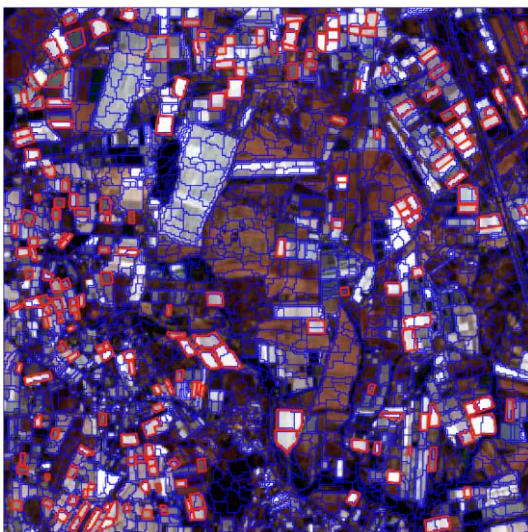
Figure S3. High resolution image sources used in Almería and Antalya in winter showing the 200 reference polygons (green in Almería and red in Antalya) and the best segmentation based on MED2 for each case. Scale (SP), shape (Shp) and MED2 value are also shown.



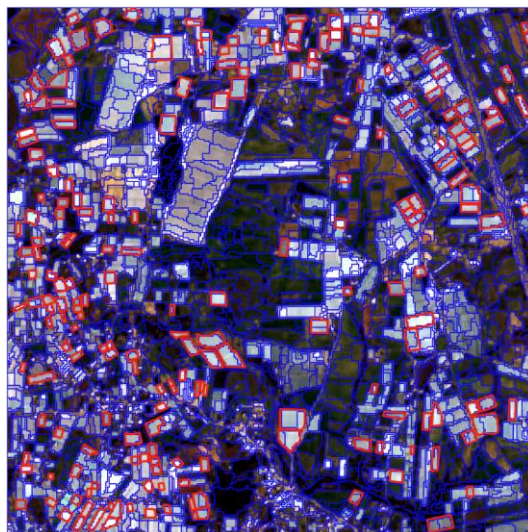
S2 Almeria winter Percent
Best segmentation (MED2=0.405): SP=6; Shp=0.2



S2 Almeria winter 16Bits
Best segmentation (MED2=0.437): SP=20; Shp=0.9



S2 Antalya winter Percent
Best segmentation (MED2=0.362): SP=4; Shp=0.2



S2 Antalya winter 16Bits
Best segmentation (MED2=0.397): SP=14; Shp=0.9

Figure S4. Medium resolution image sources used in Almería and Antalya in winter showing the 200 reference polygons (green in Almería and red in Antalya) and the best segmentation based on MED2 for each case. Scale (SP), shape (Shp) and MED2 value are also shown.